

OceanSchedules.com Help

Version 7.0

Contents

1. Getting Started.....	1
1.1. The Home Page (query screen).....	1
1.1.1. Search by Location.....	1
1.1.2. Search by Vessel.....	1
1.2. The Results Page.....	2
1.2.1. Schedules Manager™.....	4
1.2.2. Column Sorting.....	4
1.2.3. Additional Information Button.....	4
1.2.4. Contact Carrier Button.....	5
1.2.5. Book Now Button.....	6
1.2.6. Download Schedules Button.....	8
1.3. Preferences.....	8
1.4. Carrier Coverage Screen.....	9

1. Getting Started

1.1. The Home Page (query screen)

The home page for OceanSchedules.com is the screen in which you may enter a schedules query (see Figure 1).

You may search schedules for a specific pair of origin and destination or for a single vessel.

1.1.1. Search by Location

To query sailing schedules based on origin and destination select the Search By Location tab and simply type in the location names (using English names for locations) and click on the <Get Schedules> button. You can use the default values for all other fields.

1.1.2. Search by Vessel

To query sailing schedules for a specific vessel, select the Search By Vessel tab and simply type in the vessel name and click on the <Get Schedules> button. You can use the default values for all other fields.

OceanSchedules.com will query all schedules data for the entered criteria. It will only display records that have the departure date (or arrival date, depending on your selection) between the date specified in the <Date> field and a date 'x' weeks in the future where 'x' is the number of weeks specified in the <Weeks Out> field.

You will then be automatically brought to the Results Page to review the answer to your query.

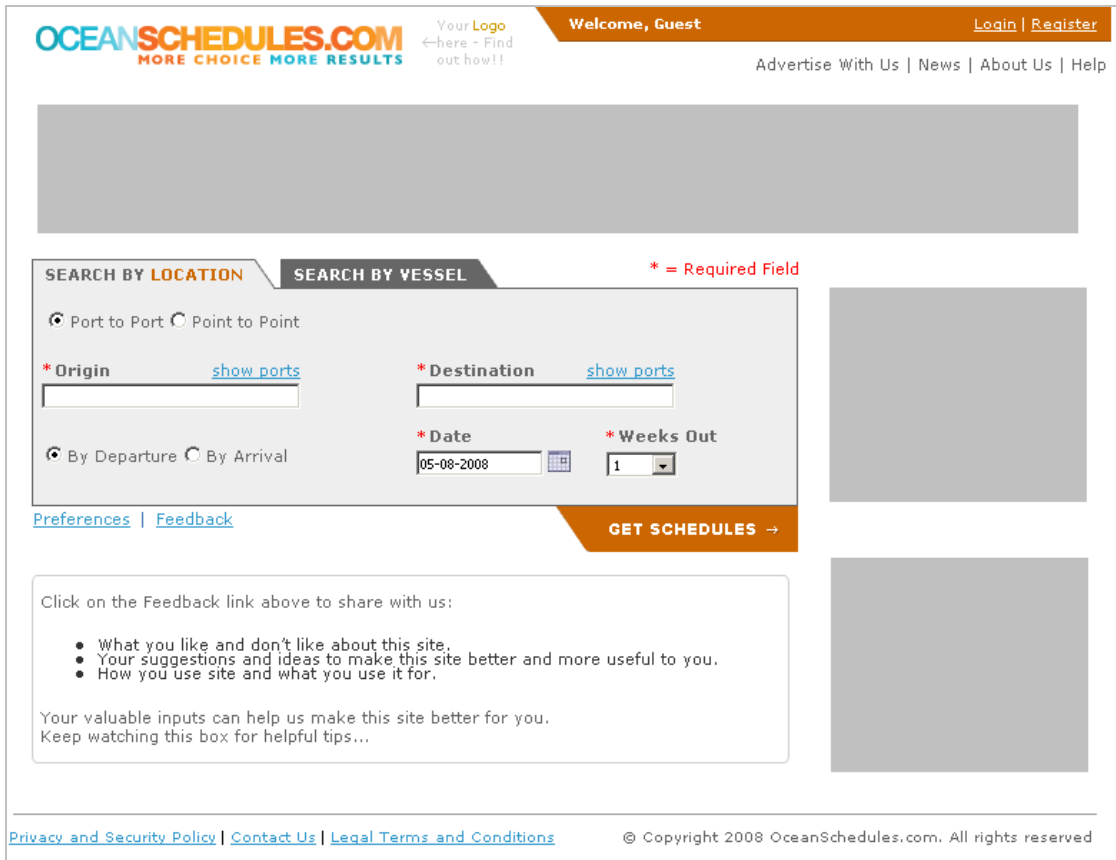


Figure 1. The Home Page (Query Screen)

1.2. The Results Page

The results page displays the answers to your schedules query and allows you to interact with the data (see Figure 2). The different features on the page are described in the sections that follow.

The query size depends on how many carriers have provided data to OceanSchedules.com for the voyage you are searching and how many weeks you requested in the query. The query size and your connection speed will determine how long the query takes to execute. Select a lower number of weeks to reduce the query time.

1.2.1. Schedules Manager™

OceanSchedules.com provides you access to traditional schedules data and the Schedules Manager™ allows you to interact with the data to quickly find the specific voyages of interest to you.

- Use your mouse to drag either of the slider icons to change the date windows or the transit-time filter.
- Check or uncheck the day-of-the-week or carrier checkboxes to instantly change the filtering of the displayed data.
- Use the “display all” or “select all” hyperlinks to quickly bring back data that is filtered out.
- Use the control total at the top to see how much you have filtered out.

Transportation filtering and carrier filtering are independent, but cumulative in impact. So, you can filter out carriers that you don't use while also filtering in the transportation portion of the Manager. The displayed records will be those that pass both filter criteria.

1.2.2. Column Sorting

Every column of data can be the sort column by clicking on the up or down arrow immediately to the right of each column heading. The sort column is lightly shaded and the sort order is indicated by highlighting the up or down arrow.

The default sort order is date (either departure or arrival, depending on the selection in the query screen) plus transit time (shortest to longest and only for “Search By Location”) plus carrier name (in alphabetical order).

1.2.3. Additional Information Button

The additional information button brings a popup window that provides additional information about a specific voyage (see Figure 4). The carrier that provided the schedule can provide a small advertisement in the right side of the popup. Clicking on that will take you to a page designated by the carrier. You may click on the Contact Now button to send your inquiry directly to the carrier about rates and other services.

Some carriers may send extra information such as cut-offs and transshipments. In those cases, you will see a blue information icon instead of the regular orange one.

Voyage and Additional Information
close window

MAERSK LINE

Vessel
KOBÉ EXPRESS

Voyage
54E10

Lloyd's Number
9143544

Port of Export
NEW YORK (USNYC)

Port of Discharge
COPENHAGEN (DKCPH)

CONTACT NOW

New York	Arrival: 08-04-2008
KOBÉ EXPRESS/54E10 (OCEAN)	Departure: 09-04-2008
Vessel Cut-Off:	07-04-2008 5:00PM
Booking Cut-Off:	07-04-2008 12:00PM
Documentation Cut-Off:	07-04-2008 12:00PM
String Name:	Pacific Atlantic Express/PAX
Vessel Flag:	US
Vessel Built Year:	1999
XXXXXX:	xxxx
Rotterdam	Arrival: 24-04-2008
MAERSK BARCELONA/0816 (OCEAN)	Departure: 25-04-2008
Esbjerg	Arrival: 26-04-2008
(RAIL)	Departure: 27-04-2008

Bold Text=Real-Time Update

Maersk Line	Maersk Line	Maersk Line	Maersk Line
Offering rapid ANZ	Offering rapid ANZ	Offering rapid ANZ	Offering rapid ANZ
Service to the shipping industry.	Service to the shipping industry.	Service to the shipping industry.	Service to the shipping industry.
www.maerskline.com	www.maerskline.com	www.maerskline.com	www.maerskline.com



Figure 4. The Additional Information Popup

1.2.4. Contact Carrier Button

You may be interested in a particular voyage that is operated by a carrier that is new to you. The “Contact-Carrier” button provides a way for you to indicate to the carrier that you would like to be contacted about a particular voyage.

The button is only ‘lit’ for carriers that have requested leads from OceanSchedules.com. If the button is ‘lit’, when you click on it, you will see the screen shown in Figure 5. A logged-in user will have much of the information pre-filled in; a non-logged-in user will need to fill in all the fields.

When you hit <Submit>, OceanSchedules will send your contact information and information about the specific voyage of interest to a pre-designated email address at the carrier. The carrier will then follow up. OceanSchedules.com can not commit for the timeliness of carrier response but it is likely it will take a few days for you to be contacted.

 Contact CMA CGM
close window 

Hitting "Submit" on this page will send your contact information below to CMA CGM and ask them to make contact with you about this specific voyage. Please enter or confirm your details below.

*** Indicates Required Field**

I would like to be contacted by CMA CGM

* Name

* Job Title

* Company Name

* Phone Number

* Email Address

* City

* Country

* # containers/month this trade

* # containers/month all trades

* Commodity

Notes Comments

I am already a customer of this carrier on this trade.

SUBMIT →

Figure 5. The Contact-Carrier Popup

1.2.5. Book Now Button

You may wish to make a booking on a specific voyage directly from OceanSchedules.com.

This is possible through our strategic relationship with INTTRA Inc., the world's largest portal for ocean container shippers.

The button will be 'lit' only if the carrier accepts bookings via the INTTRA portal. If the carrier does not accept bookings via INTTRA, you will need to use an alternate channel to make your booking.

Even if the button is 'lit', you will not be able to make a booking unless:

- a. You are registered at OceanSchedules.com.
- b. You are logged into OceanSchedules.com.
- c. You have a login and password for INTTRA.
- d. You are 'registered' with the desired carrier at INTTRA. Registration is the process during which INTTRA makes internal configurations to allow smooth data exchange to and from a specific carrier. Each individual carrier requires registration.

Figure 6 shows the popup window that you will see when you are asked to login to INTTRA.

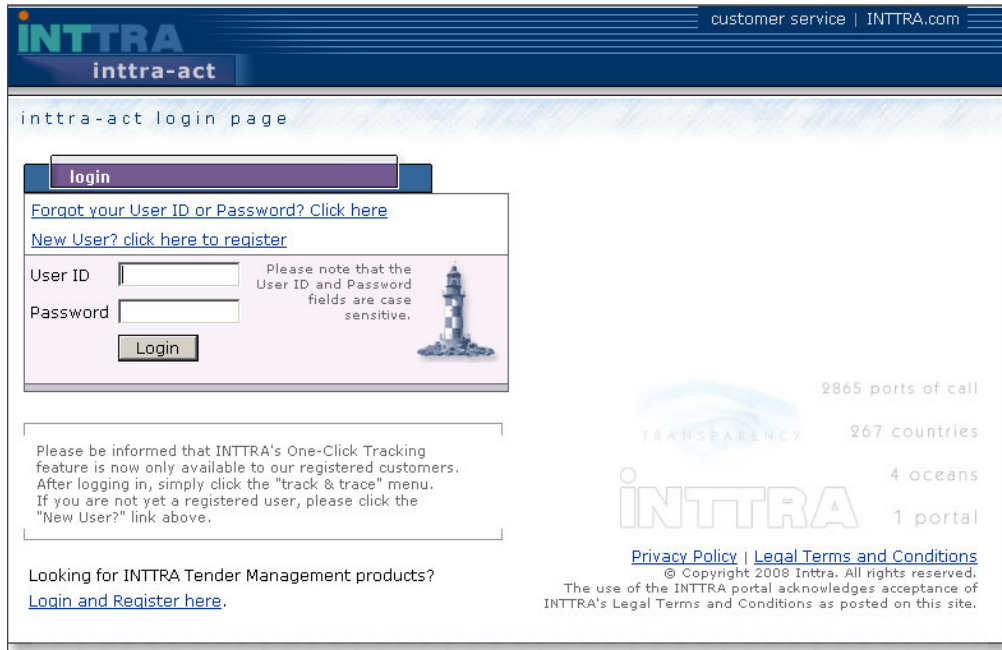


Figure 6. The INTTRA Login Screen

Figure 7 shows the data that is passed by OceanSchedules.com to INTTRA's booking application. In addition, the carrier name is passed to the booking. You can complete the booking and submit it just as you would with any other INTTRA booking.

Ocean Carriage	
Load Port	<input type="text" value="SINGAPORE, SINGAPORE"/> search
Vessel	<input type="text" value="APL CYPRINE"/>
Voyage	<input type="text" value="137E"/>
Sail Date	<input type="text" value="02-Jun-2006"/>
Discharge Port	<input type="text" value="HONG KONG, HONG KONG"/> search
Vessel Schedules (optional)	search schedules

Figure 7. Data passed to the INTTRA Booking Application

If you try to make a booking with a carrier that you are not already registered with at INTTRA, you will see the screen in Figure 8. You can work with INTTRA's customer service group to get registered for future use.

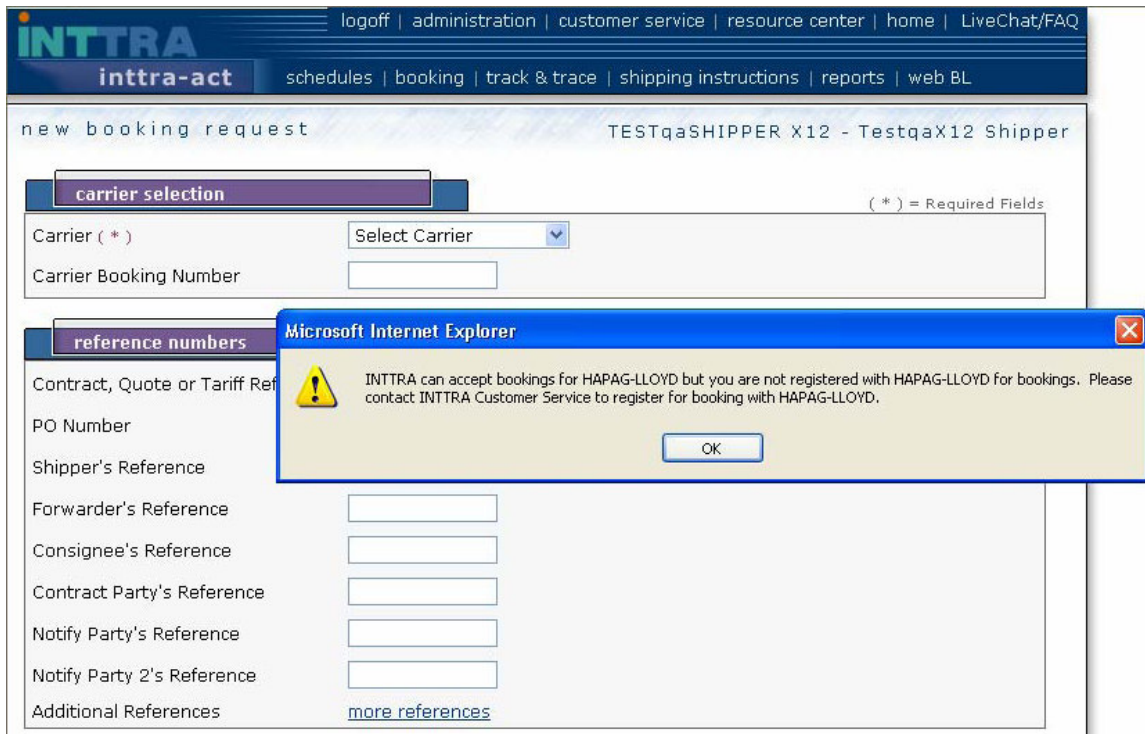


Figure 8. Attempting to book in INTRTA with a carrier with which you are not registered

1.2.6. Download Schedules Button

At many times, you may want to capture the details of a schedules search for further analysis or to email to someone else. You can accomplish this by downloading the data to an Excel file using the 'Download Schedules' Button.

You may only use this button if you are registered on OceanSchedules.com and you have logged in. If you meet both of these prerequisites, hitting the <Download> button will copy all of the records on the screen (using your current Schedules Manager™ filters) to a csv format that will go automatically into Excel if your browser is configured to do this.

If your browser is not configured to do this, you will need to save the csv file and then open it in Excel in a separate window.

1.3. Preferences

Once you register on OceanSchedules.com, you are able to set preferences so that the system saves you more time. The Preferences screen (see Figure 9) is accessible from the home page, to the bottom left of the Search box. It also automatically follows the Registration screen when you are registering.

The date preference control the format used when you enter a date on the search page and also controls the display format for dates throughout the application. The 3 choices are MM-DD-YY, DD-MM-YY and DD-MMM-YY. The default date format is DD-MMM-YY (for example, the 4th of July, 2006 would be "04-JUL-06").

The language preference only supports English in this version. Future versions will offer a user interface in additional languages.

Other preferences control the way that schedules data displays on the Results Screen. Each option is described below.

- **Carriers.** De-select the carriers that you want to have automatically removed from the display using the Schedules Manager™ check boxes. All carriers with their box checked will remain on the data display. The default is to have all carriers selected.
- **Departure Day of the Week.** De-select any day of the week that you want to have automatically removed from the display using the Schedules Manager™ check boxes. All days with their box checked will remain on the data display. The default is to have all days selected.
- **Arrival Day of the Week.** De-select any day of the week that you want to have automatically removed from the display using the Schedules Manager™ check boxes. All days with their box checked will remain on the data display. The default is to have all days selected.
- **Show Surrounding Ports with Search Results.** Click <Yes> to have the query look for ports near the port you entered and bring those results back with the results that you asked for. Click <No> to have the query only look for the port that you entered. The default is <Yes>.

PREFERENCES

Setting preferences allows you to customize the user interface (for display and entry format for date) and to configure the results screen to auto-filter based on carrier, departure day of the week and arrival day of the week. Setting carriers, days of the week and surrounding ports can make your queries more useful to you and save you time.

Carriers

ALIANÇA
 ANL CONTAINER LINE
 CMA CGM
 CROWLEY LINER SERVICES
 CSAV
 CSAV NORASIA
 DAL
 EMIRATES SHIPPING LINE
 HAMBURG SÜD
 HANJIN SHIPPING
 HAPAG-LLOYD
 HYUNDAI MERCHANT MARINE CO., LTD.
 K LINE
 LIBRA
 LIBRA URUGUAY

Date Format

Language

Departure Day
M T W T F S S

Arrival Day
M T W T F S S

Show Surrounding Ports With Search Results
 yes no

Service Type
 Direct With Transshipment Not Specified

Figure 9. Preferences Screen

1.4. Carrier Coverage Screen

OceanSchedules.com has a large number of carriers that provide schedules information directly to our databases. You can see the list of participating carriers and the date of their most recent update on the Carrier Coverage Screen (see Figure 10). This screen is accessible from the <About Us> menu, by selecting 'Carrier Coverage' from the left-side navigation menu.

The “Most Recent Schedule” column is updated whenever a carrier sends an update to OceanSchedules.com.

OCEANSCHEDULES.COM MORE CHOICE MORE RESULTS

Your Logo ← Here - Find out how!

Welcome, Wagner Rodrigues Logout | My Account

Home | Advertise With Us | News | **About Us** | Help

- About Us
- Carrier Coverage
- Contact Us
- User Guide

Carrier Coverage

This page provides the date of the last update to schedules data from all carriers included in this site. All data is provided directly from participating carriers to ensure the most timely and accurate information for your shipment planning.

OceanSchedules.com welcomes schedules data from all ocean-container carriers worldwide. If you would like a carrier's schedules to be included on this site, contact OceanSchedules.com at schedules@OceanSchedules.com.

Carrier	Most Recent Schedule
ALIANÇA	10-Oct-2008
ANL CONTAINER LINE	10-Oct-2008
CMA CGM	10-Oct-2008
COSTA CONTAINER LINES	10-Oct-2008
CROWLEY LINER SERVICES	10-Oct-2008
CSAV	06-Oct-2008
CSAV NORASIA	06-Oct-2008
DAL	10-Oct-2008
EMIRATES SHIPPING LINE	10-Oct-2008
EVERGREEN LINE	06-Oct-2008
HAMBURG SÜD	10-Oct-2008
HANJIN SHIPPING	09-Oct-2008
HAPAG-LLOYD	09-Oct-2008
HYUNDAI MERCHANT MARINE CO., LTD.	10-Oct-2008
K LINE	10-Oct-2008
LIBRA	06-Oct-2008
MAERSK LINE	04-Oct-2008
MCC Transport Singapore Pte Ltd	04-Oct-2008
MISC BHD	09-Oct-2008
MITSUI OSK LINE	10-Oct-2008
MSC	10-Oct-2008
NYK LINE	10-Oct-2008
SAFMARINE	05-Oct-2008
SENATOR LINES	10-Oct-2008
UNITED ARAB SHIPPING COMPANY	18-Sep-2008
WAN HAI LINES LTD.	05-Oct-2008

Figure 10. Carrier Coverage Screen as of October 2008